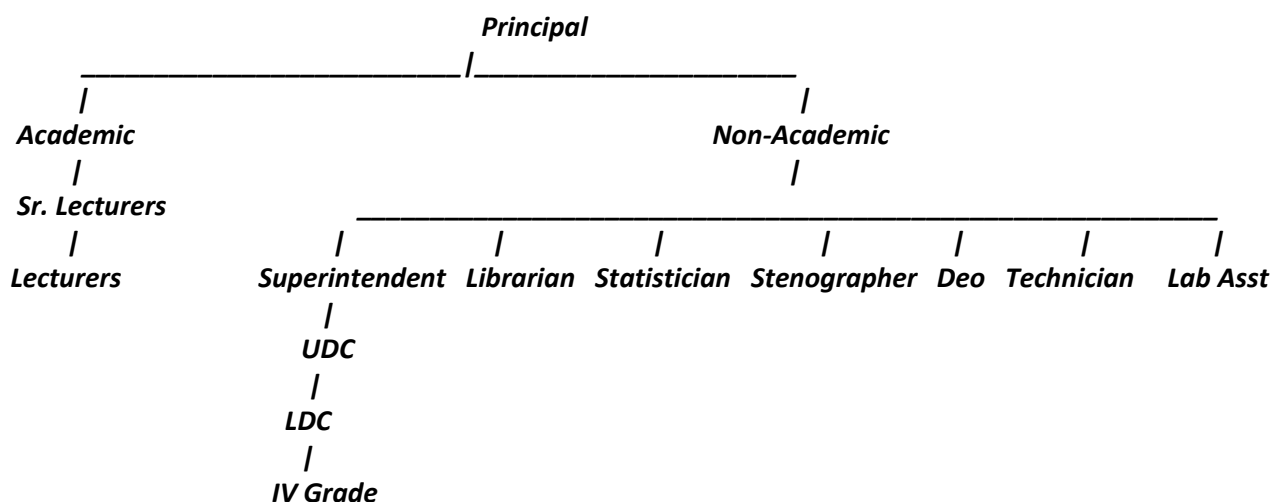


TISS Evaluation of the CSSTE, August-September 2017		Tool 5	Institution fact sheet for IASE, CTE, DIET and BITE
Instructions Please fill up the basic information about the institution, with the help of interview of the institution head. General (Data may available with CTE/DIET/BITE- In Annual work plan Document – 5 year trend)			
State	<b>Mizoram</b>	District/ Place	<b>Lunglei</b>
Name of institution	<b>DIET</b>	<b>Lunglei</b>	
Researcher name	Vanlalruatfela Hlondo	Date of visit	<b>6/9/2017</b>
Respondent name	<b>T. BIAKZAMA</b>	Designation	<b>Superintendent</b>

- When was the institution established? Was it upgraded from some earlier institution? What was its earlier form?

***28.9.1974 as UGTTI, upgraded to TTI on 4/7/1980 and again upgraded to DIET on 4/2/1993***

- Organizational Structures (organogram) today.



- Academic posts vacancy (note vacancies and transfers over the last five years)

***Post vacant – 11(Lecturer-8, Sr.lecturer-3,***

***Transferred – 4 lectureres, viz. J.Lalsangzuala, Laldinmawii, lalrinsangi fanai, TBC Lalniliana.***

- Non academic posts (note vacancies and transfers over the last five years)

***Post vacant – 3(assistant-1, accountant-1, computer operator -1)***

***Transferred – B. lalengzami (transferred to SCERT)***

5. What are the key duties which the institution is expected to perform and which are performed within the current constraints of resources ? (note expected duties and actually performed duties)

***Expected key duty of institution is to improve teaching-learning process. Training to the trainees during the whole academic session each year and also to conduct short course training to teachers of concerned Middle and Primary Schools on various subjects within its jurisdiction.***

6. Has there been any recent major revision of the duties and functions of the institute? After RtE? After CSSTE 12<sup>th</sup> plan?

***Through in-service teachers training***

7. When did these take place? And why? ( who has occasioned them? For what reasons ? etc)

- ***Throughout the year***
- ***Whenever necessary***

8. Was there any revisioning exercise based on which these changes were made?

- ***Yes, Through training***

9. Have there been any major restructuring of the institution? Why? How does the present structure compare with the earlier structure? Better/more problems etc.

- ***NA***
- ***Implementation of B.Ed course is under proceess***

6. Collection of related Documents-Syllabus of ongoing courses (Pre-Service) and Annual work plan/budget(if any)

- ***Attached***

7. Which of the following activities of the DIET are currently taking place (as envisioned in the 2012 guidelines):

Role	Yes/No		
1. Has the DIET been conducting ISTE programs?	<b>Yes</b>	No. of Master resource persons prepared, no. of courses designed, school follow up and documentation	NA
2. Has the DIET planned for direct school intervention and improvement?	<b>Yes</b>	How Many interventions planned and what kind of interventions?	<b>-School lad area selected. -School internship for IVth semester students</b>
3. Has the DIET developed as a resource centre?	<b>Yes</b>	What kind of resources? How many? Who uses the resource centre?	<b>Computer centre in collaboration with NIELIT for students</b>
4. Has the DIET organized forums?	<b>No</b>	How many? On what? And for whom were these conducted?	NA
5. Has the DIET organized co-curricular activities?	<b>Yes</b>	How many conducted? How many participants were there? On what were the forums conducted?	<b>Sports, Debate, Cultural items, competition, story writing competition</b>
6. Has the DIET followed the staffing guidelines?	<b>Yes</b>	<b>It is followed as far as possible, though there are many vacant posts</b>	<b>Faculty staffs be appointed on need-based</b>
7. Does the DIET have a PAC?	<b>Yes</b>	If yes, is the composition as per suggested norms? How many times have they met? Are there any minutes of meetings? Collect if any?	<b>Yes, the composition was as per suggested norms. Meeting met once in a year- minute available.</b>
8. Are the infrastructure facilities at the DIET as per the guidelines?(use guidelines to expand and check against each)	<b>Yes</b>	<ul style="list-style-type: none"> <li>- Classrooms</li> <li>- Seminar rooms</li> <li>- Special rooms</li> <li>- Staff rooms</li> <li>- Library</li> <li>- Hostels</li> <li>- Canteen/ Dining Hall</li> </ul>	
9. Has the DIET established systemic linkages with other institutions?	<b>Yes</b>	Details of linkages/interactions with SSA, RMSA, CTE, SCERT, NGOs, Higher education institutions, others. What is the nature of/ operational form of these linkages and meetings?	<b>Closely linked with SSA, RMSA, and Higher education institutions (College)</b>

10. Does the DIET conduct any programs/activities for faculty development and capacity building?		How many in the last five years, topics, number of participants?	<b><i>In-House seminar and workshop</i></b>
11. Is the DIET involved in research activities?		-Areas of research covered - No. Of publications	<b><i>Implementation of CCA Impact of MDM on retention (Not yet published)</i></b>
12. Has the DIET prepared the perspective plan?		How is it prepared?	<b><i>Prepared at the SCERT level following the uniform format</i></b>
13. Has the DIET prepared its annual plans		How are these prepared?	<b><i>AWP is prepared at the institution for every academic session</i></b>
14. Has the DIET introduced any innovation in the role it plays?		Details of innovative programs? Who has funded them?	<b><i>Students have the opportunity to have CCC which is necessary for getting into teaching profession</i></b>

## 8. CTEs

### 8.1. Role as envisaged under 2012 CSSTE Guidelines

Role	Yes/No	If yes, details	Remarks
1. Has the CTE played a role in development of excellence in secondary teacher education?		-Needs analysis surveys for trainings conducted -Creation of context specific handbooks -maintenance of detailed database on secondary schools and secondary school teachers -other activities	
2. Have new CTEs been set up wherever a need was identified?			
3. Has the CTE developed collaboration with IASEs?		-Capacity development of CTEs -Capacity development for handling research	
4. Has the CTE developed collaborations with SCERT?		-Facilitating collaborations with other state agencies  Support provided to the CTEs PAC	

5. Has the CTE used ICT effectively?		-Adherence to NCFTE 2009 norms Retention of institutional memory -Retention of institutional memory -Institutional Development -Development of institutional links -Development of locally relevant teacher education modules -Development of COPs	
6. Has the PSTE programme been implemented?		How many students have completed students the PSTE?	
7. Has the mandated process of tracking and monitoring been followed?			
8. Does professional development of TEs form a part of the CTEs activities?		In What way?	
9. Has the ISTE program been implemented?		How many participants in 5 years?	
10. Has the CTE provided extension and resource support to secondary schools		How many schools? What kind of support has been provided?	
11. Has the CTE provided resource support to DIETs?		How many? When? What support was provided?	
12. Has the CTE established linkages with other education institutions?			
13. Has the CTE undertaken research?		Number of research studies? What were the topics? How were these disseminated or used?	
14. Has material development taken place?		What kind of material? How many resources were used? Where is this material available?	
15. Is the organizational structure and personnel as per the given norms			If these are not followed, why not?
16. Are the 1989 infrastructure guidelines followed			If these are not followed, why not?
17. Is the annual work plan prepared?			If this is not prepared, why not?

18. Are there annual reports prepared?			If this is not prepared, why not?
19. Does the CTE have a perspective plan prepared?			If this is not prepared, why not?
20. What innovations have been introduced by the CTE in its role?			

## 9. Academic and non-academic posts vacant as of August/Sept 2017:

	Sanctioned	Post filled	Permanent / Contractual	Innovations/ Measures to deal with vacancies	Any Litigation for not filling up vacancies
Academic	<b>23</b>	<b>12</b>	<b><i>All Under CSS except Principal</i></b>	<b><i>The Gov't is taking up measures to fill up the vacancies</i></b>	<b><i>Yes</i></b>
Non-academic	<b>19</b>	<b>16</b>	<b>2</b>	<b><i>The Gov't is taking up measures to fill up the vacancies</i></b>	<b><i>No</i></b>
Total	<b>42</b>	<b>25</b>	<b>2</b>		

## 10. Faculty Information

1.	Is there an appointed head or acting head?	<b><i>Yes, Appointed Head</i></b>
2.	What is the total faculty senior	<b>1</b>
3.	What is the total faculty-junior	<b>10</b>
4.	How many faculty fulfill the NCTE qualifications	<b><i>All faculty as per NCTE norms</i></b>
5.	Which subject specializations do faculties have? Science, maths, language(of the state/region), English, social sciences, work experience art, physical education, education foundations including psychology and history.	<b><i>Science – 1 ,     Art - 0</i></b> <b><i>Maths - 1         PE - 0</i></b> <b><i>Language – 2     Foundations - 4</i></b> <b><i>English – 2</i></b> <b><i>SS – 2</i></b> <b><i>WE – 2(Instructors)</i></b>

## 11. How many in-service programmes were conducted under the CSSTE scheme?

	For teachers	For MRPs/KRPs	For teacher educators/TEIs	School heads
2011-2012	<b>15</b>			
2012-2013	<b>15</b>			<b>2</b>
2013-2014	<b>20</b>			<b>1</b>
2014-2015	<b>18</b>			
2015-2016	<b>16</b>			<b>2</b>
2016-2017	<b>20</b>			

## 12. How many inservice programmes were conducted under other schemes ? (SSA/RMSA/other state funds)

	For teachers	For MRPs/KRPs	For teacher educators/TEIs	School heads
2011-2012	<b>8(SSA)</b>			
2012-2013	<b>8(SSA)</b>			
2013-2014	<b>3(SSA)</b>			
2014-2015	<b>5(SSA)</b>			
2015-2016	<b>4(RMSA)</b>			
2016-2017	<b>2(RMSA)</b>			

## 11. Student Profile

Course Name	No. of Students	No. of Girls	No. of SC Students	No. of ST students	No of students from under Rs. 1 lakh annual family income	Any other details
<b>III Sem</b>	<b>55</b>	<b>32</b>	<b>-</b>	<b>55</b>	<b>5</b>	
<b>I Sem</b>	<b>76</b>	<b>44</b>	<b>-</b>	<b>76</b>	<b>6</b>	

## 11. Funds received and utilized by DIET/CTE/BITE Under the CSSTE scheme (CENTRAL SHARE)

Sl. No	Year	Fund proposed(in Lakhs)	Fund sanctioned (in lakhs)	Fund received (in lakhs)	Date on which funds received	Fund utilized (in lakhs)	If there was any additional (apart from what was received from the centre as per guidelines) source of funding please mention
1	2011-2012	<b>161.62</b>	<b>161.62</b>	<b>161.62</b>	<b>5/8/2011 – 14/3/2012</b>	<b>161.62</b>	
2	2012-2013	<b>148.41</b>	<b>87.62</b>	<b>87.62</b>	<b>26/6/2012- 31/3/2013</b>	<b>87.62</b>	
3	2013-2014	<b>276.78</b>	<b>417.60</b>	<b>417.60</b>	<b>5/5/2013- 19/3/2014</b>	<b>417.60</b>	
4	2014-2015	<b>105.00</b>	<b>690.57</b>	<b>690.57</b>	<b>25/8/2014- 10/3/2015</b>	<b>690.57</b>	
5	2015-2016	<b>146.17</b>	<b>209.71</b>	<b>209.71</b>	<b>24/4/2015- 17/2/2016</b>	<b>209.71</b>	
6	2016-2017	<b>42.40</b>	<b>167.07</b>	<b>167.07</b>	<b>6/4/2016- 9/3/2017</b>	<b>167.07</b>	

## 12. Funds received and utilized by DIET/CTE/BITE Under the CSSTE scheme(STATE SHARE 10%)

Sl. No	Year	Fund proposed(in Lakhs)	Fund sanctioned (in lakhs)	Fund received (in lakhs)	Date on which funds received	Fund utilized (in lakhs)	If there was any additional (apart from what was received from the centre as per guidelines) source of funding please mention
1	2011-2012	<b>71.66</b>	<b>68.21</b>	<b>68.21</b>	<b>NA</b>	<b>68.21</b>	
2	2012-2013	<b>81.92</b>	<b>49.65</b>	<b>49.65</b>	<b>NA</b>	<b>49.65</b>	
3	2013-2014	<b>49.33</b>	<b>41.40</b>	<b>41.40</b>	<b>NA</b>	<b>41.40</b>	
4	2014-2015	<b>46.40</b>	<b>39.84</b>	<b>39.84</b>	<b>NA</b>	<b>39.84</b>	
5	2015-2016	<b>59.48</b>	<b>66.08</b>	<b>66.08</b>	<b>NA</b>	<b>66.08</b>	
6	2016-2017	<b>33.24</b>	<b>29.97</b>	<b>29.97</b>	<b>NA</b>	<b>29.97</b>	



13. What were the other sources from which funds were received?(please include also funds raised by the institution locally.

Sl. No	Year	Source/Scheme	Amount(in lakhs)	Purpose	Date on which funds received	Fund utilized(in lakhs)	Achievements
1	2011-2012	NA	NA	NA	NA	NA	NA
2	2012-2013	NA	NA	NA	NA	NA	NA
3	2013-2014	NA	NA	NA	NA	NA	NA
4	2014-2015	NA	NA	NA	NA	NA	NA
5	2015-2016	NA	NA	NA	NA	NA	NA
6	2016-2017						